

Union County Farm Loop



20

Buy fresh produce. Meet the growers. Learn about our agricultural heritage.

The Union County Farm Loop is a perfect way to enjoy the scenery and explore some of the abundant farms and ranches that are the heart and soul of the Grande Ronde Valley. This self-guided tour of farms, dairies, ranches, orchards, gardens and self-serve farm stands highlights traditional and modern farming methods. Depending on what they produce, participating farms and ranches have varying seasons, so be sure to call ahead to schedule a visit or tour. Once a year, most are open for the **Union County Farm Crawl**, a one-day event celebrating nature's bounty. Find out more about the event and other things to see, do and taste at visitunioncounty.org.

La Grande

Established as a stop on the historic Oregon Trail, La Grande continues to be a regional center for education, medical care and retail trade. Located at the crossroads of Interstate 84 and four state routes, the city is the home of Eastern Oregon University and offers all visitor services. Located in Max Square, downtown, the popular La Grande Farmers Market opens in mid-May and continues through October, Tuesdays from 3 to 6 p.m. and Saturdays from 9 a.m. to noon.

Cove Cove history and activities: coveoregon.org

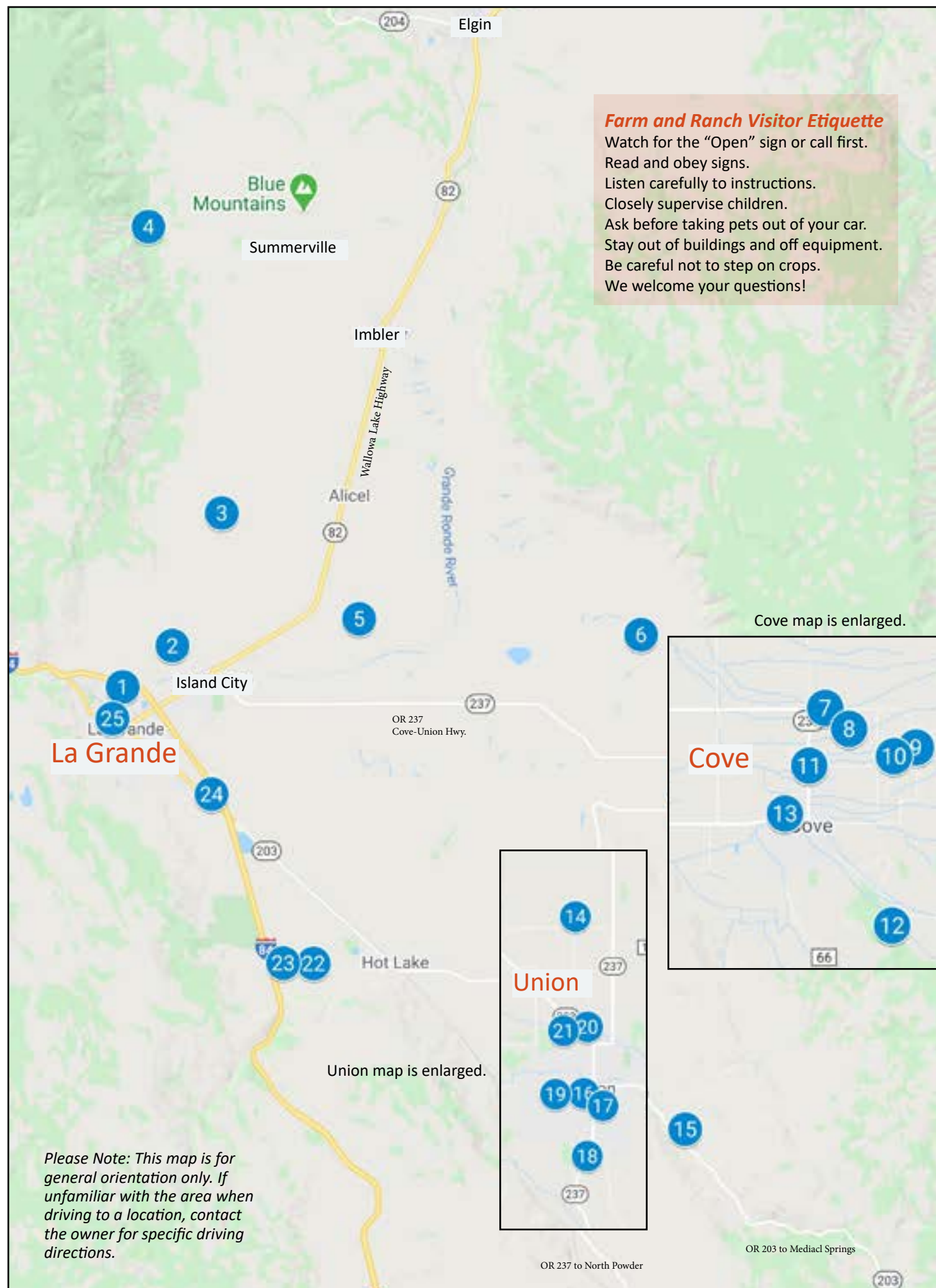
Cove has been a fruit production center for over 100 years. Today, approximately 500 acres of commercial orchards, planted mostly in sweet cherries and peaches, grace the hillsides above town. Cherries are in bloom in spring, ripening in early summer and ready to eat in July. The Cove Cherry Fair is held in August to celebrate the crop. Small-scale livestock production, field crops, and produce growers make up the remaining farm operations.

Union Union history and activities: grvoutskirts.com

In the quaint Victorian era town of Union there are lots of opportunities to get out of your car, explore and have a meal or snack. The annual Eastern Oregon Livestock Show & Rodeo takes place every June, bringing youth from throughout the region to town to show and sell their livestock and horses. Grassroots Festival takes place in August. Experience the town's charm, then head north toward La Grande on OR Hwy 203.



10



Farm and Ranch Visitor Etiquette

Watch for the "Open" sign or call first.
Read and obey signs.
Listen carefully to instructions.
Closely supervise children.
Ask before taking pets out of your car.
Stay out of buildings and off equipment.
Be careful not to step on crops.
We welcome your questions!

Cove map is enlarged.

Union map is enlarged.

Please Note: This map is for general orientation only. If unfamiliar with the area when driving to a location, contact the owner for specific driving directions.

OR 237 to North Powder

OR 203 to Mediac Springs



A Self-Guided tour of farms, farm stands and agricultural points of interest in the Grande Ronde Valley. Buy locally grown!

- 1) **Avella Orchard** 541.663.6756
2807 N. Fir Street, La Grande **Tours by arrangement**
Two acre heirloom fruit and nut "forest" within the city limits of La Grande, begun in the 1950s. Over 250 unusual, rare and local pioneer trees include apples, pears, plums, apricots, quince, mulberries, cherries, chestnuts, walnuts, filberts, and almonds. www.avellaorchard.blogspot.com
- 2) **Evergreen Family Farm** text or call 541.359.5085
62402 Evergreen Road, La Grande
This family farm uses organic practices to grow vegetables, fruit and cut flowers. Shop at their farm stand or find them at the La Grande Farmers' Market, Saturday mornings. Facebook and Instagram @evergreenfamilyfarmlagrande
- 3) **Mt. Emily Farmstead** 541.786.6015
63172 Starr Lane, La Grande
Organic practices are used for eggs, goats milk, sauerkraut, native plants and flowers, dried herbs, garlic and garden produce. Also, beautiful Hanoverian sport horses and Alpine wethers for packing. **Call or text to visit the farm stand.**
- 4) **Northwest Skillet Co. & Homestead Springs Farm**
Summerville 541.605.8286
Visits by appointment only, please call or text.
Watch the talented artist blacksmith at work and purchase his heirloom quality skillets and utensils. The farm includes gardens, sheep, Kunekune pigs, poultry and livestock guardian dogs on a picturesque acreage at the foot of Mt. Emily. www.northwestskilletcompany.com
- 5) **Mint Condition & Rudd Farms**
62913 Wallsinger Lane, Cove
Purchase fragrant home, bath and body products made from the farm's own peppermint oil. Visit her website for products and information, www.mintconditiongiftco.com
- 6) **Pick'N Patch** 541.786.2421
62816 Lower Cove Rd, Cove
Open all of October. Explore the corn maze and choose from a wide variety of pumpkins and fall decor to take home and enjoy. facebook.com/PickNPatchFarm/
- 7) **The PlantWorks** text or call 541.786.5122
69465 Lantz Lane, Cove **Visits by appointment only**
Purchase native trees, shrubs, wildflowers, grasses and wetland plants for rehab or landscaping. Expert advice on what to plant where! www.theplantworksllc.com

- 8) **Folly Farm** 541.805.8563
67364 Squire Loop, Cove
Visit the micro-farm and you-pick garden focusing on gourmet garlic and open-pollinated heirloom vegetables. Just stop in or call for an appointment for your first visit and they'll show you how things work. During growing season, the farm is open during the day for you-pick kitchen veggies, and by appointment for garlic, canned goods, and bulk harvests when available. www.follyfarmoregon.com
- 9) **Cove Honey** 541.910.2444
61062 Stackland Road, Cove
Admire the views at the roadside self-serve honey stand and purchase local honey and honey products.
- 10) **Almosta Farm at Cove** 503.849.4228
69749 Antles Lane, Cove
Nigerian Dwarf goat farm. Goats, raw milk, honey, bee products, soap, candles, preserves, eggs and baked goods. Educational and fun activities for children if scheduled ahead. Interact with goats, a pot bellied pig, and chickens; learn about honey bees and bee hives. Farms stays available through Airbnb or Harvest Host. **Watch for Open sign or call before visiting.** www.almostafarmcove.com
- 11) **Nella Mae's Farm** 541.910.4098
1006 Antles Lane, Cove
Nella Mae's farmstand, located at the corner of Antles Lane and Highway 237, offers local fruits, vegetables, eggs and more. The stand is open 24/7 from March-Oct. Self-serve on the honor system; leave your cash or check payment in the box. **When the gate is open**, stop by the farm at 69361 Antles Lane for a tour. facebook.com/nellamaesfarm
- 12) **Apple Spring Farm** 541.429.5124
60024 Thew Loop, Cove
An organic micro farm offering vegetable and flower starts in the spring; fresh vegetables, fruit, berries and flowers, grown with care in their garden, and organic free range eggs. The on-site farmstand and lovely setting invites you to linger a while. Open June - Oct.; 10 to 4 p.m., Weds. and Sundays
- 13) **Ascension Camp** 541.568.4514
Church Street, Cove
Structures include the historic Ascension Chapel and Barton House, both built in the 1870s. Campers learn regenerative methods of growing food. www.coveascensionschool.com
- 14) **Grande Ronde Goat Dairy** text to 541.805.9622
near Union **Visits and tours by appointment only**
The Grade A commercial goat dairy, sells raw milk to artisan cheese makers in Northern California. With over 800 milking

- does, the dairy uses a rotary milking parlor and large loafing shed. Doe goats kid December through June. www.granderondenubians.com
- 15) **Buffalo Peak Livestock Co.** 541.805.1124
60983 Hwy 203, Union
Working cattle ranch demonstrating that agriculture can coexist and benefit from good fishery habitat and functional ecosystems. **Tours of restoration projects available by appointment only.** andrea@holisticmanagement.guide www.holisticmanagement.guide
- 16) **Hometown Hardware Store** 541.562.5472
206 South Main Street, Union
A fun stop, this hardware and liquor store has an espresso shop and a garden center, with plants grown for the area. facebook.com/Hometown-Hardware-Store
- 17) **Union County Museum** 541.562.6003
333 South Main Street, Union
Exhibits include Agriculture, Timber & Transportation; Cowboys Then & Now; the Livery station; the General Store, and more. www.ucmuseumoregon.com
- 18) **The Cottage at Union Meadows** 541.805.1124
1782 South Main Street, Union
Stays at the cottage can be booked through Airbnb. Exclusively grass-fed beef, grown to enhance the health of the land that creates it and the people who enjoy it. Call before visiting or to place an order or download an order form from the website. www.beyondorganicbeef.com
- 19) **Eastern Oregon Agriculture Research Station**
372 South Tenth Street, Union 541.562.5129
An Oregon State University facility developing agricultural and natural resource strategies for intermountain forest and shrub ecosystems. oregonstate.edu/dept/eoarcunion/
- 20) **Platz Family Farm** 541.562.5072 or 541.805.1560
1624 North First, Union (turn north off Hwy 203)
The farmstand season starts with spring salad greens, then a variety of summer fruits and vegetables including U-pick and we-pick berries, finishing with a bountiful harvest of sweet corn, tomatoes, and a variety of winter squash. Also farm fresh eggs, local crafts and goodies. Open Mon., Wed., and Fri., 10 a.m. to 6 p.m., end of May through late October. www.platzfamilyfarm.com
- 21) **Cat's Paw Farm & Mercantile** 541.910.4961
1260 Second Street, Union Entrance from Hwy 203
Stop by the charming little farm shop for organic eggs, an amazing array of handcrafted soaps, skin/hair care, plant

- crafts, herbal teas & spices, shrubs, mustards, Pygora Luxury Fiber, crafts; Poultry meat by reservation. Baby Pygora goats for viewing and petting. Also, shop online www.catspawfarm.com.
- 22) **Ladd View Ranch** 541.910.8009
64280 Hot Lake Lane, La Grande
Ladd View Ranch, located on the Oregon Trail, raises and sells registered Babydoll Southdown sheep, a small sized heritage breed of sheep often described as "woolly teddybears" because of their woolly faces and natural smiles. See how the sheep are managed to enhance the ecology of the orchard, pond, stream, and woodland areas and meet these woolly teddybears. See lambs from mid-February through May. Raw wool is available upon request. **Farm visits and tours welcome by appointment.** www.laddviewbabydollsheep.com
- 23) **Boothman Ranch** 541.962.9287
Hot Lake Lane, La Grande
Call to schedule a tour of a working cattle ranch. Learn how traditional cowboy husbandry and modern techniques work together to produce high quality beef.
- 24) **Intermountain Livestock** 541.963.2158
60654 Livestock Rd (at McAllister Rd)
Stop in Thursday afternoons to watch a professional auctioneer and expert livestock handlers run a fast-paced livestock auction. Rancher-approved burgers at the cafe'. www.imlivestock.com
- 25) **Community Merchants** 541.663.0575
1210 Adams Avenue, La Grande
Fill the freezer with locally raised meat or shop for a full range of local products and crafts. facebook.com/CommunityMerchants/

La Grande Farmers' Market
Find the freshest local produce, flowers and plants, baked goods and more at the Farmers' Market, downtown at the corner of Adams Avenue and Fourth Street. May through Oct.; Tuesdays, 3 to 6 p.m. / Saturdays, 9 a.m. to noon

Union County Chamber of Commerce Visitor Center,
207 Depot Street, La Grande 541.963.8588
Stop by for maps and tips on things to see and do, where to eat, stay and play in Union County and throughout the region. www.visitunioncounty.org

Map funded by:



20